

CRUZ
Exposed IP54, recessed IP20

THORN

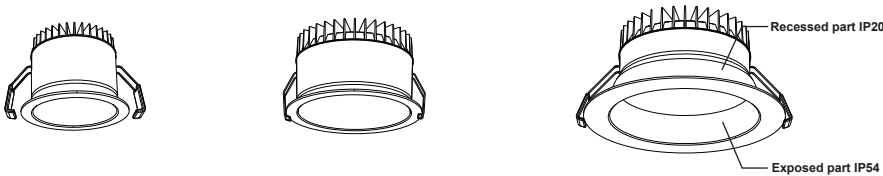
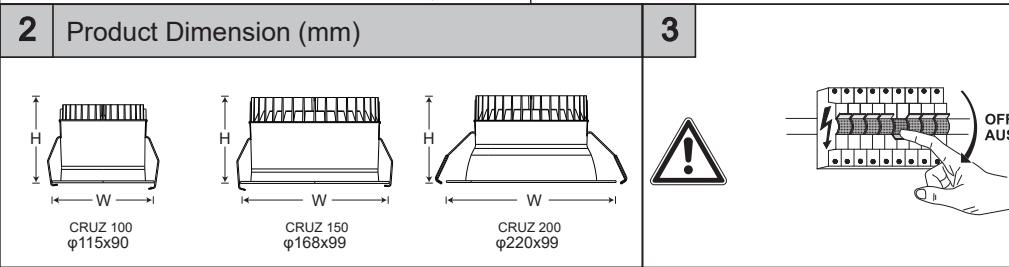
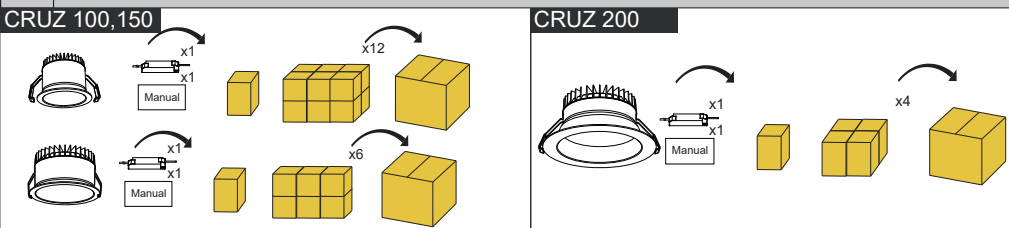


Table with 6 columns: Description, Input, PF, Wattage, Operating, Dimension. It lists specifications for CRUZ 100, 150, and 200 models in various wattages (10W, 14W, 18W).

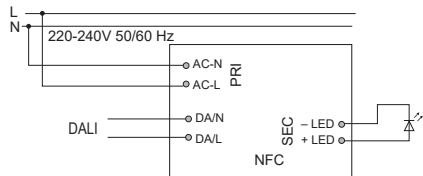


EN Mounting instructions

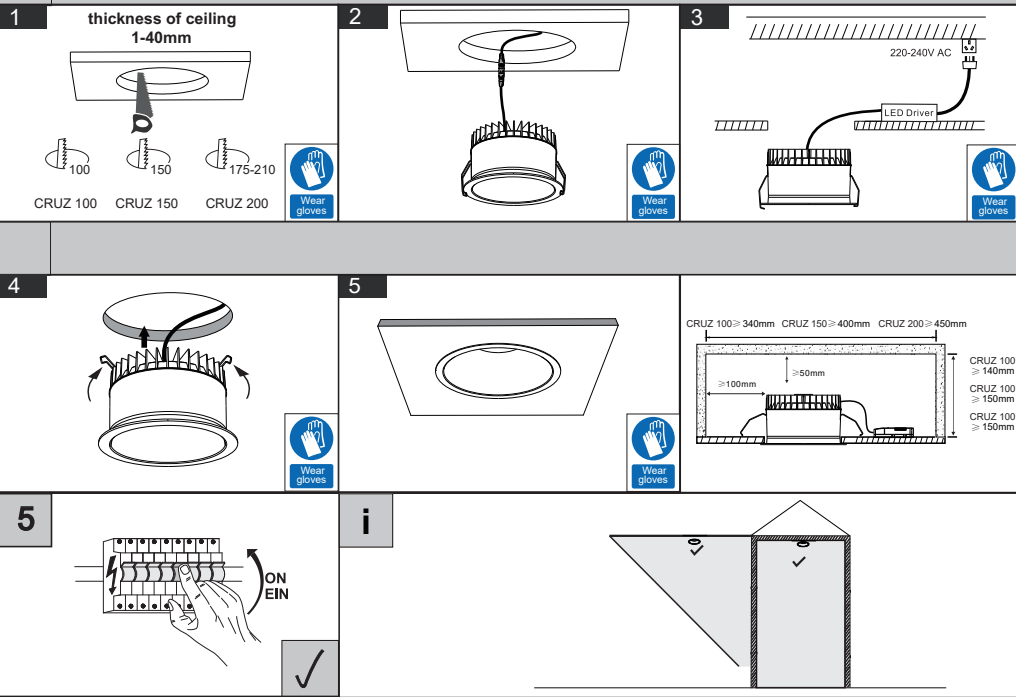
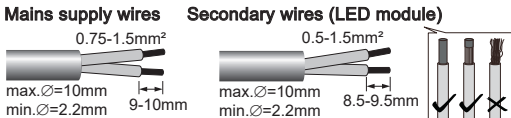
1 Packaging Details



4 Wiring Mode



LC_14W_100_400mA_42V_o4a_NF_SC_EXC3
LC_28W_300_700mA_42V_o4a_NF_SC_EXC3



EN Instructions for assembly, installation and operation! This product is for indoor lighting use only.

The Installation and commissioning of the luminaire as well as any modification to the luminaire may only be performed by authorized personnel (qualified electrician). The luminaire is used exclusively for lighting and is to be installed in accordance with the national installation regulations. Caution! Make sure that the luminaires and power supply units are always disconnected from the mains supply during wiring and installation work. Otherwise, the LED modules may be destroyed. Hot plug-in is not permitted. Hot plug-in may result in damage to the luminaire and entail loss of warranty claims! The manufacturer is not liable for damages resulting from improper or faulty installation or operation or from unauthorized modifications to the luminaire. The light source contained in this luminaire shall only be replaced by the manufacturer or his service agent or a similarly qualified person.

- 1. If the external soft cable or soft cord of the luminaire is damaged, it should be replaced by the manufacturer or its service agent or similar qualified person to avoid danger.
- 2. The insulation between the LV power supply and the control conductor (FELV) is basic insulation.

